

Rancho Tierra Grande Fire Safety Team

2021 Evacuation Training



The goal of this 2021 RTG Evacuation Drill/discussion is to minimize loss of life and property to residents of RTG. The key to success is planning and training before an event.

5 Main Factors for Planning:

- Risk Assessment
- Communications
- Accountability
- Organization
- Guidelines

Risk

Fuel

Weather

Topography

Access/egress

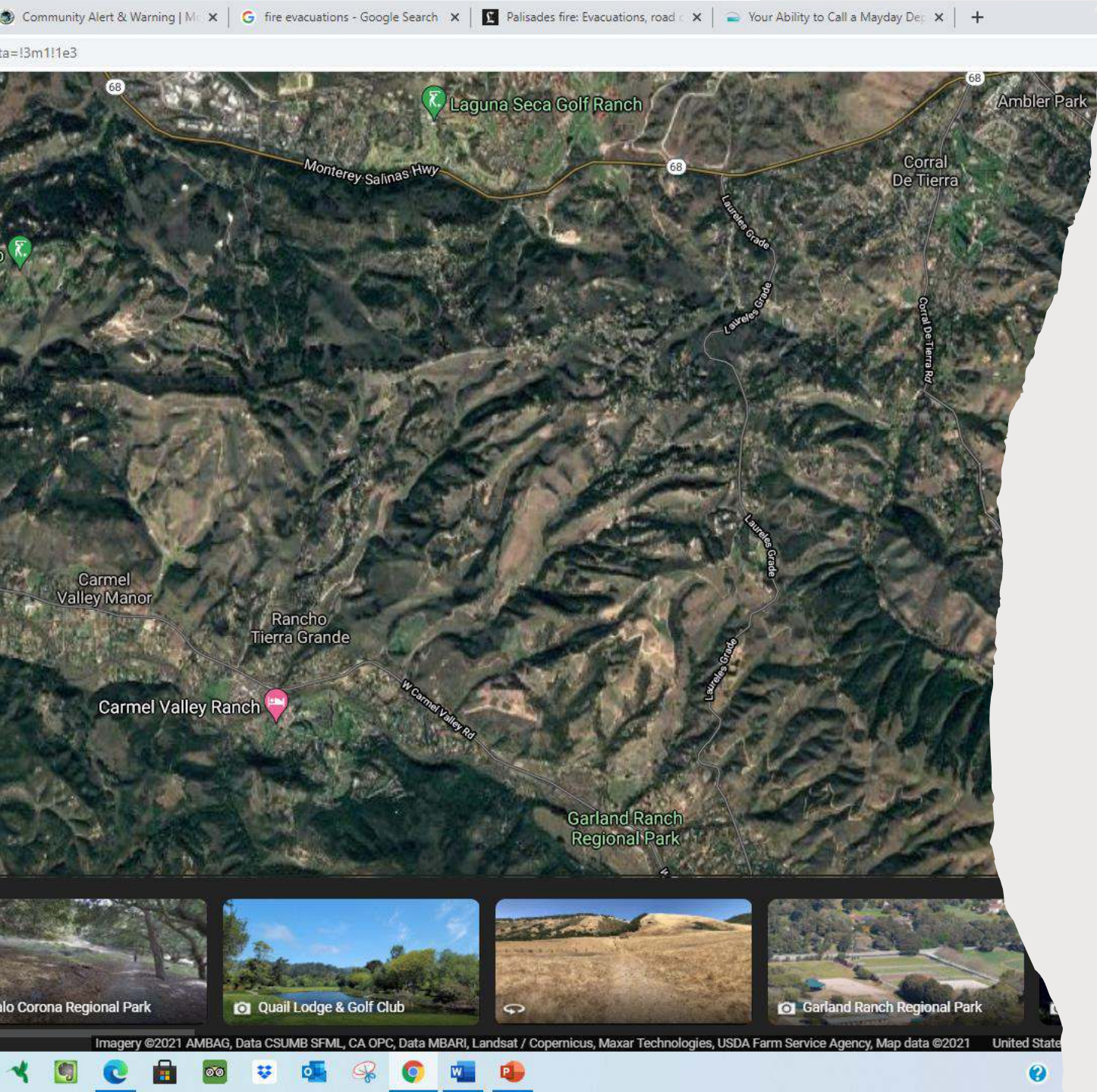
Demographics



3 Types of Evacuations

- 1. Evacuation Warning:** Pre-notification for a pending evacuation. This would allow for maximum discretionary time. RTG was under this in June 2020.
- 2. Evacuation Order:** This would be an order given by the authorities (either Incident Management Team or MCRFD). Moderate discretionary time. Area east of Laureles Grade was under this in June 2020.
- 3. Emergency Evacuation:** Initiated either by us or MCRFD in which a fire starts in/very near to RTG and we must leave immediately. Zero discretionary time.





Evacuation/Escape Routes

- Down Tierra Grande to Carmel Valley Road
- Up Tierra Grande to Boots Road and Hwy 68 (Vermeil Property)
- Out Winkleblack property from Venado Court (extremely dangerous), last resort
- [Evacuation Route out Vermeil property.](#)
- [Realistic conditions during and evacuation.](#) **Do not stop. Drive slow and steady with headlights on, wipers on, and AC set at recirculation**



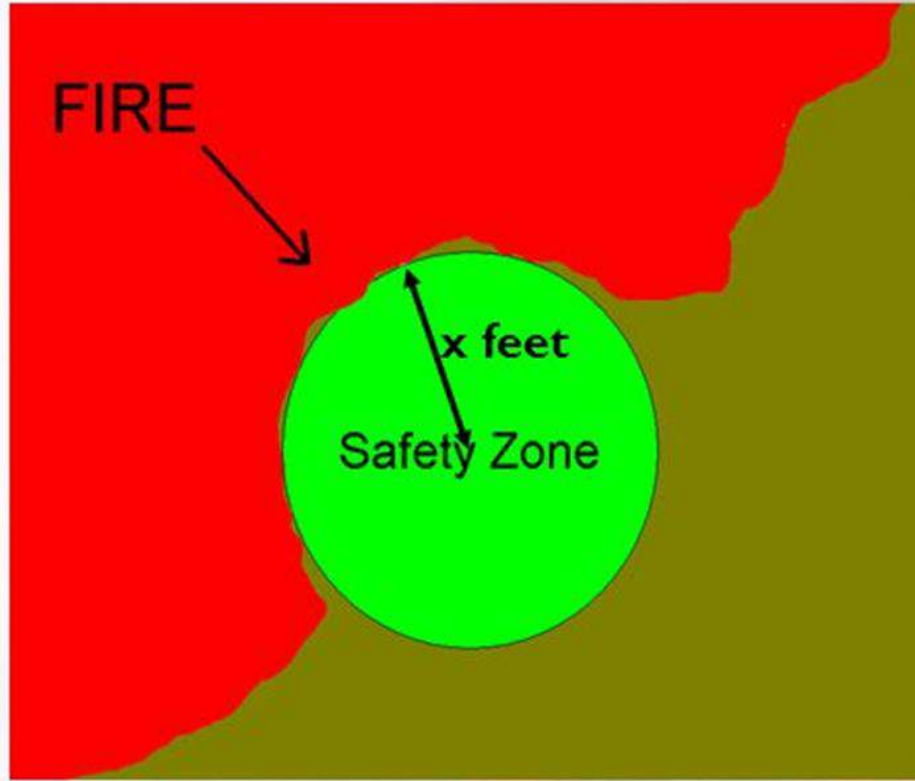
Safety Zones

- Designed to allow temporary refuge if you cannot escape

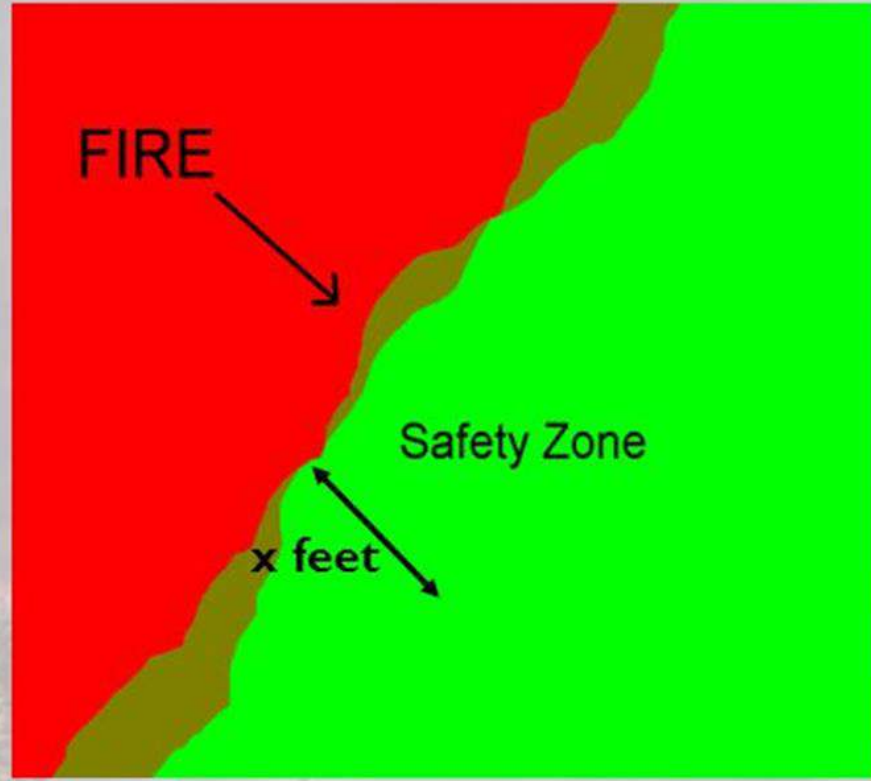
Couple survived 6 hours in neighbor's pool...

- <https://www.latimes.com/local/abcarian/la-me-abcarian-sonoma-fire-20171012-htmlstory.html>

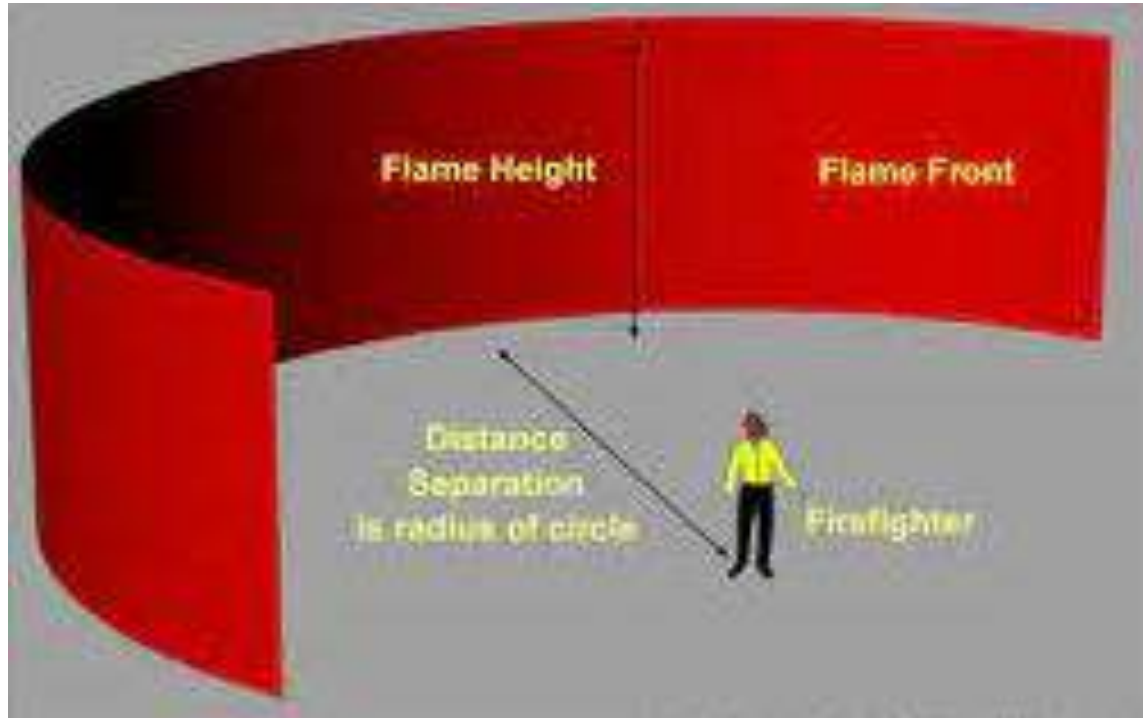




Fire surrounding a circular shaped safety zone gives the worst case (most radiant heat transfer).



Fire and safety zone edge more closely resemble a straight line. Radiant heat transfer from the "sides" is low.





Allied Public Safety Partners

- MCRFD
- Monterey Sheriff
- California CHP
- CERT (Community Emergency Response Team)



"I have found that, in battle, plans are useless, but planning is indispensable" Dwight D. Eisenhower

- Down Tierra Grande to Carmel Valley Road
- Up Tierra Grande to Boots Road and Hwy 68 (Vermeil Property)
- Out Winkleblack property from Venado Court (extremely dangerous), last resort



Communications

- Email/Zoom/Website (Evac warnings)
- Texts and cell calls (Evac orders)
- Radios/Reverse 911 to cell (Emergency Evac)

Communications

- Email/Zoom/Website
 - https://www.co.monterey.ca.us/government/departments-administrative-office/office-of-emergency-services/situational-awareness/public-alert-warning?gclid=EAlaIQobChMlu8rDg7S18QIVkm1vBB0f1wC5EAAYAiAAEgl_XfD_BwE
- Texts and cell calls
 - Discussion on rostering
- Radios/Reverse 911 to cell (Emergency Evac)
 - Demetrius Kastros – Monterey CERT – Radio Demonstration

Accountability

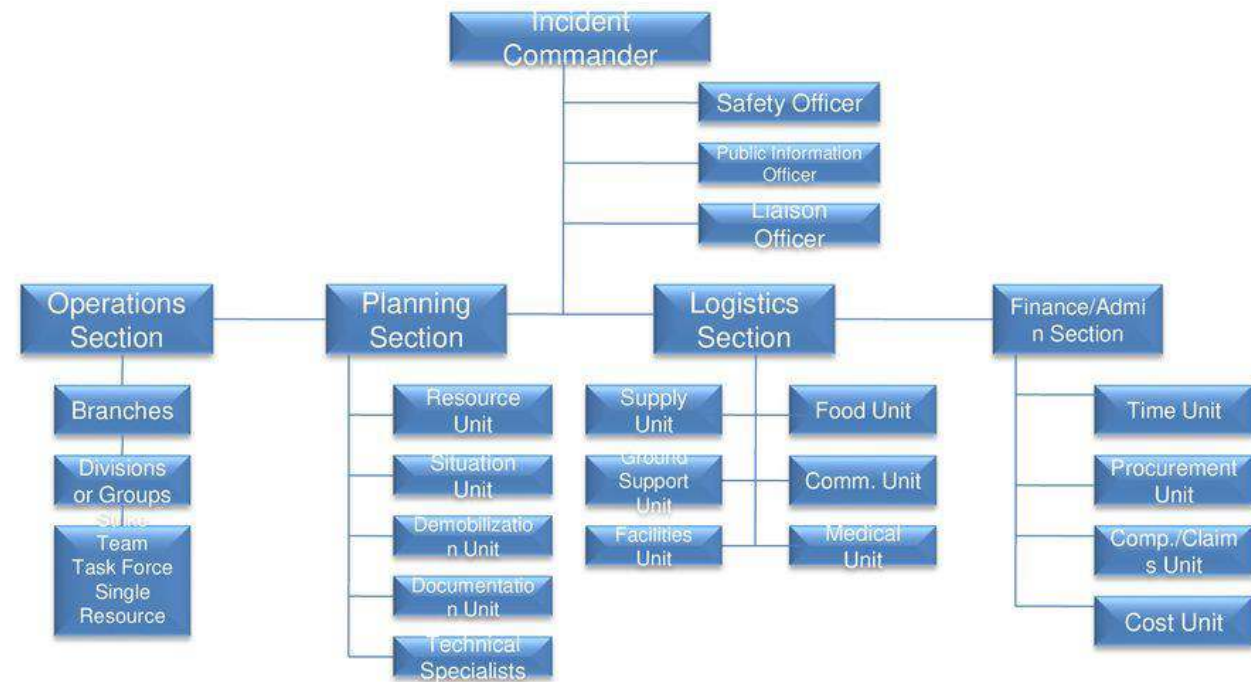
- Fire Safety Team Roster
- Neighborhood Roster
- FD/LAW



Organization

- Leads
- Branch Directors
- Captains

ICS Organizational Chart



Guidelines

Notifications

Evacuations

Communications